

STEEL BUILDINGS IN EUROPE

Single-Storey Steel Buildings

Part 8: Building Envelope

Single-Storey Steel Buildings

Part 8: Building Envelope

FOREWORD

This publication is part eight of the design guide, *Single-Storey Steel Buildings*.

The 10 parts in the *Single-Storey Steel Buildings* guide are:

- Part 1: Architect's guide
- Part 2: Concept design
- Part 3: Actions
- Part 4: Detailed design of portal frames
- Part 5: Detailed design of trusses
- Part 6: Detailed design of built up columns
- Part 7: Fire engineering
- Part 8: Building envelope
- Part 9: Introduction to computer software
- Part 10: Model construction specification
- Part 11: Moment connections

Single-Storey Steel Buildings is one of two design guides. The second design guide is *Multi-Storey Steel Buildings*.

The two design guides have been produced in the framework of the European project "Facilitating the market development for sections in industrial halls and low rise buildings (SECHALO) RFS2-CT-2008-0030".

The design guides have been prepared under the direction of Arcelor Mittal, Peiner Träger and Corus. The technical content has been prepared by CTICM and SCI, collaborating as the Steel Alliance.

Contents

	Page No
FOREWORD	iii
SUMMARY	vii
1 INTRODUCTION	1
1.1 The building envelope	1
1.2 The functions of building envelope	3
2 TYPES OF METAL CLADDING SYSTEMS	4
2.1 Single-skin trapezoidal sheeting	4
2.2 Built-up double skin cladding	5
2.3 Insulated (composite or sandwich) panels	8
2.4 Standing seam systems	9
2.5 Structural liner trays	10
2.6 Structural deck and membrane roof systems	10
3 SPECIFICATION OF THE CLADDING	12
3.1 Weathertightness	13
3.2 Building appearance	14
3.3 Thermal performance	15
3.4 Interstitial condensation	18
3.5 Acoustics	18
3.6 Fire performance	20
3.7 Durability	21
3.8 Structural performance	21
4 COLD ROLLED SECONDARY STEELWORK	24
4.1 Purlin and side rail options	24
4.2 Loading	30
4.3 Deflections	31
4.4 Purlin and side rail selection	31
4.5 Restraint provided to the rafters and columns	32
4.6 Restraint of purlins and cladding rails	33
5 HOT-ROLLED SECONDARY STEELWORK	35
REFERENCES	37

SUMMARY

This publication provides guidance on selection of the building envelope for single-storey buildings. The building envelope is generally formed of secondary steelwork (often cold-rolled steel members) and some form of cladding. In addition to providing a weathertight barrier, the envelope may also have to meet thermal, acoustic and fire performance requirements. In some arrangements, the building envelope may have an important structural role in restraining the primary steel frames.

The document describes the common forms of cladding for single storey buildings, and offers advice on how an appropriate system is specified. The document also describes the systems of secondary steelwork that support the cladding.

1 INTRODUCTION

Metal cladding systems provide an efficient, attractive and reliable solution to the building envelope needs of single storey buildings (steel, concrete or wood framed structures). Over the years, these systems have evolved from the single skin metal cladding often associated with agricultural buildings to highly developed systems used in industrial, retail and leisure applications. However, as with all construction components, the ability of the cladding to satisfy its functional requirements is dependent on its correct specification and installation and, equally as important, on its interaction with the other elements of the building envelope and structure.

This publication provides guidance relating to the secondary structures and building envelope types used in single storey buildings. Description is given of the common types of profiled metal cladding systems currently used in Europe. These systems include insulated panels, built-up systems, deck and membrane, and liner trays. Guidance is also given on key issues that should be considered when specifying either the building envelope or its supporting structure.

Reference is made to a selection of technical documents published by The Metal Cladding and Roofing Manufacturers Association (MCRMA). These technical documents provide comprehensive guidance on various associated topics, which are applicable throughout Europe and can be readily downloaded from www.mcrma.co.uk. Additional information can also be found on the French language website Acier Construction at <http://www.acierconstruction.com>

Guidance has been included in this document which considers the restraining action of the secondary steelwork to primary steelwork and the restraint provided by cladding sheeting to secondary steelwork. However, in certain countries within Europe (e.g. in France), this restraining behaviour cannot be utilised, and a footnote has been added highlighting where this is the case.

1.1 The building envelope

The principal components of a modern metal-clad industrial type building are shown in Figure 1.1.

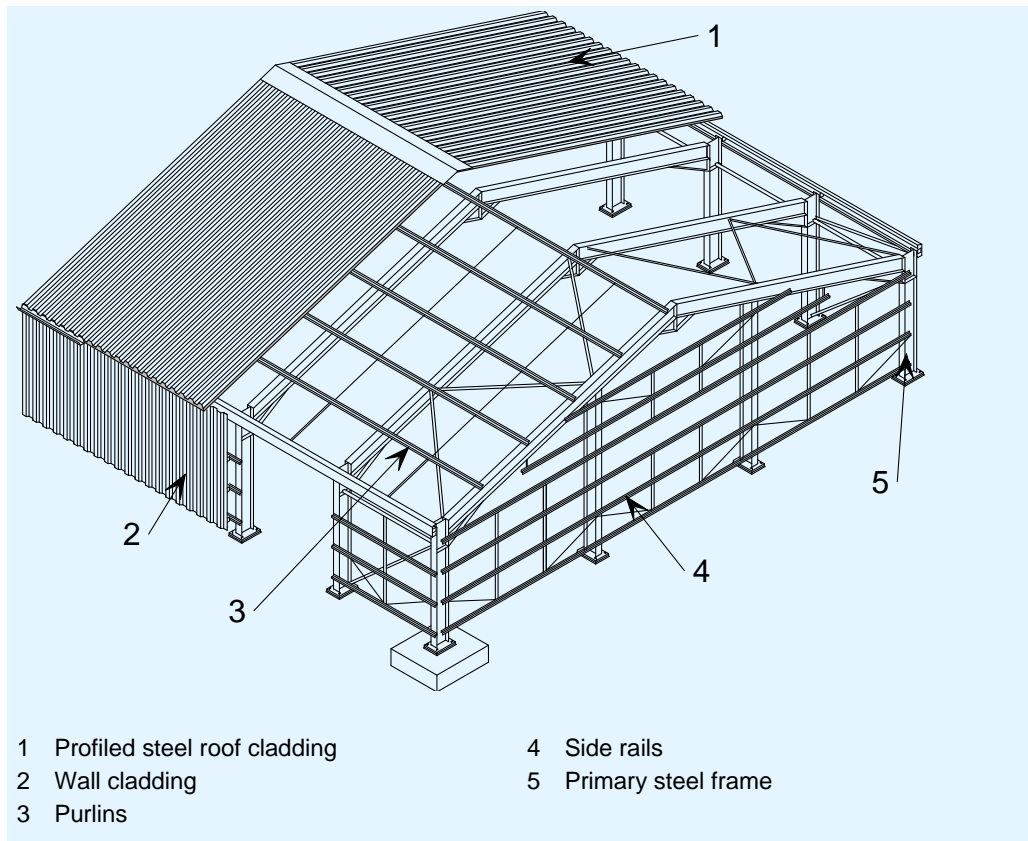


Figure 1.1 Principal building components

There are essentially three layers to the structure:

1. The primary steel frame, consisting of columns, rafters and bracing. The example shown in Figure 1.1 is a portal frame, but the guidance given in this publication is also applicable to other types of structure.
2. The secondary steelwork, consisting of side rails for the walls and purlins for the roof. These members serve three purposes:
 - To support the cladding
 - To transfer load from the cladding to the primary steel frame
 - To restrain the primary steel frame members (see Section 4.5 on limitations on such use) .
3. The roof and wall cladding, whose functions include some or all of the following:
 - Separating the enclosed space from the external environment
 - Transferring load to the secondary steelwork
 - Restraining the secondary steelwork
 - Providing thermal insulation
 - Providing acoustic insulation
 - Preventing fire spread
 - Providing an airtight envelope

- Providing ventilation to a building (ventilated or unventilated roofs and walls).

The cladding will also normally include ancillary components such as windows, rooflights, vents and gutters.

As an alternative to the layout shown in Figure 1.1, some types of cladding may be installed directly to the primary steelwork without the need for purlins or cladding rails. Examples of this type of construction are deck and membrane for roofs and liner trays for walls. Where such solutions are chosen, the cladding must be designed to:

- Span directly between the rafters, roof beams or trusses. This is usually achieved by the use of deep profiled decks or trays, but where these are insufficient for the required span, intermediate supports in the form of secondary beams or hot-rolled purlins will need to be installed.
- Restrain the primary steel members. Structural decks and liner trays, if fastened correctly, should be able to provide sufficient lateral restraint to the outer flange of the supporting rafter or column. This should allow the columns and rafters to be designed as fully restrained under gravity loads or positive wind pressure. However, additional restraining members will need to be included in the structure in order to provide intermediate restraint against wind suction (uplift on the roof).

1.2 The functions of building envelope

All buildings, whatever their use, must provide a controlled internal environment that is protected from the variable and uncontrollable external climate. The nature of the internal environment will depend on the intended use of the building and this will naturally determine the requirements for the building envelope.

Generating and maintaining a controlled internal environment is a complex process, requiring a combination of mechanical and electrical services to heat and/or cool the building and a well-designed building envelope to regulate the heat gain and loss. The design of the building envelope is an important factor in specifying the Mechanical and Electrical (M&E) plant and in determining the energy performance of the building. With pressure to reduce energy consumption now being placed on the construction industry across Europe, the building envelope has never before been under such close scrutiny.

In addition to forming the building envelope, the roof and wall cladding may also have an important role to play in the structural performance of the building, by providing restraint to the secondary steelwork against lateral-torsional instability. Where such restraint is assumed (as is often the case in the purlin and side-rail manufacturers' load/span tables), it is essential that the cladding is capable of providing this restraint in practice.

2 TYPES OF METAL CLADDING SYSTEMS

There are a number of proprietary types of cladding that may be used in industrial buildings. These tend to fall into a few broad categories as described in this Section.

The steel sheet is generally coated with a zinc or zinc-aluminium alloy in a hot-dip process. The top coating is an organic coating to provide an attractive finish, typically based on Polyvinyl-chloride (PVC or Plastisol), Polyvinylidene-fluoride (PVDF or PVF2), Polyester or Polyurethane formulations. Aluminium cladding sheets are also available.

For hot-dip galvanised sheeting, typical design lives are shown in Table 2.1.

Table 2.1 Typical design life for coated steel sheet

Coating	Design life (years)
PVC – 200 microns	10 – 30
PVC – 120 microns	10 – 25
PVDF or PVF2 – 25 microns	10 – 15
Polyester – 25 microns	5 – 10
Polyurethane – 50 microns	10 – 15

2.1 Single-skin trapezoidal sheeting

Single-skin sheeting is widely used in agricultural and industrial structures where no insulation is required. The sheeting is fixed directly to the purlins and side rails as shown in Figure 2.1. The cladding is generally made from 0,7 mm gauge pre-coated steel with a 32 mm to 35 mm trapezoidal profile depth.

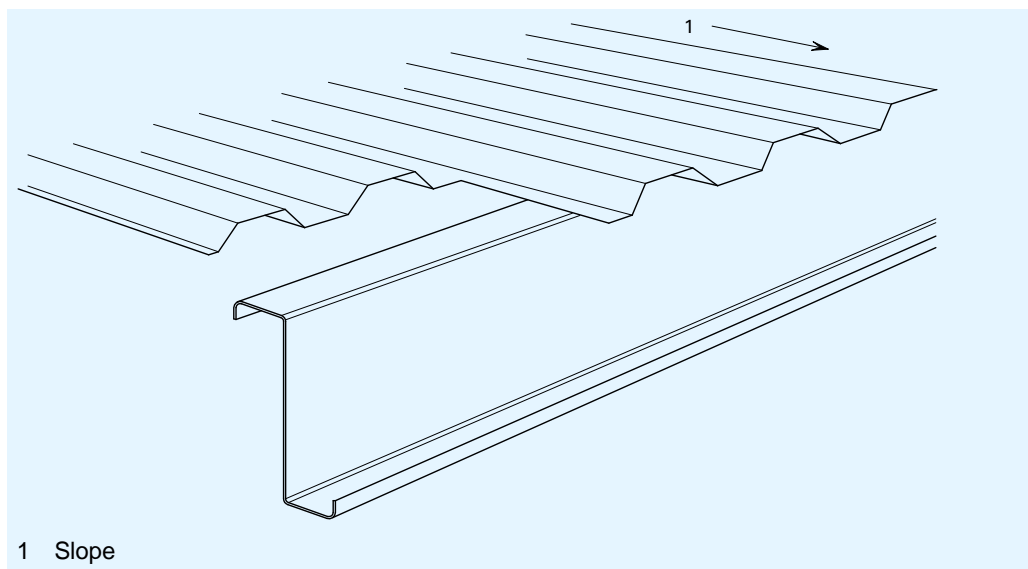


Figure 2.1 Single-skin trapezoidal sheeting

2.2 Built-up double skin cladding

This common type of cladding consists of a metal liner, a layer of insulation material, a spacer system and an outer metal sheet, as illustrated in Figure 2.2. The span of such systems is limited by the spanning capability of the cladding sheets, which is typically in the order of 2 m to 2,5 m depending on the applied loading. Built-up cladding systems must, therefore, be supported by secondary steelwork (purlins or side rails). As the name suggests, these systems are built up from their constituent parts on site.

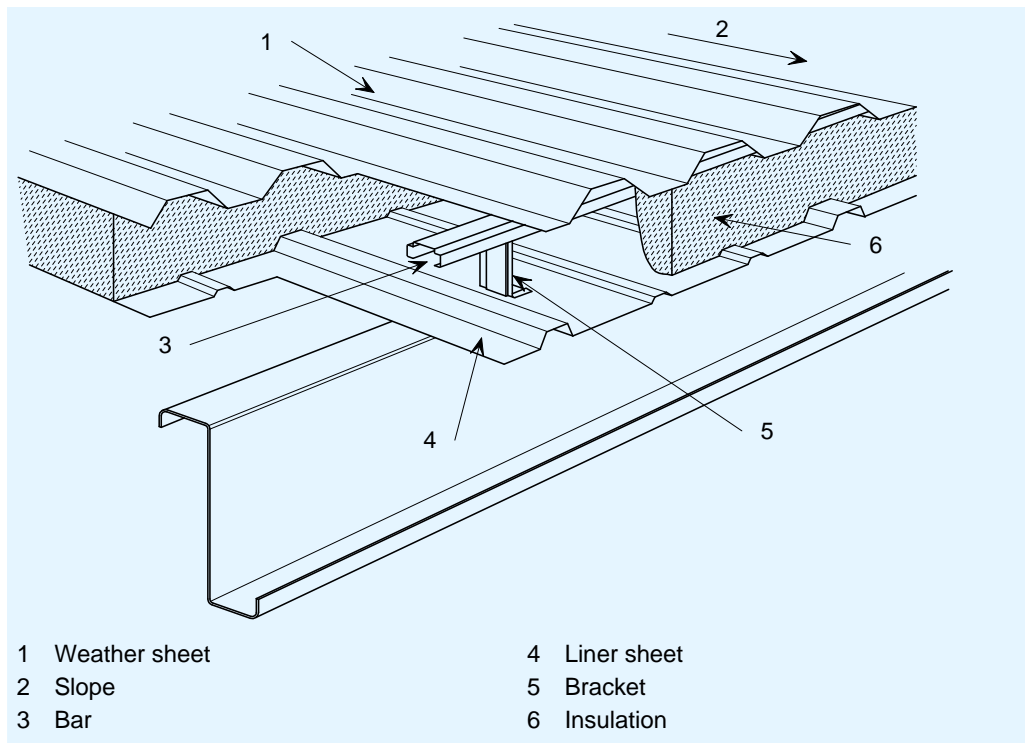


Figure 2.2 Built-up roof cladding

2.2.1 Liner sheet

The liner sheet serves several purposes:

- It supports the thermal insulation
- It provides an airtight layer
- It provides restraint to the purlins.

Liner sheets are usually manufactured from cold formed pre-coated steel or aluminium and possess a shallow trapezoidal profile (i.e. height 18 mm to 20 mm is illustrated in Figure 2.3). For steel liners, the sheet thickness is usually either 0,4 mm or 0,7 mm, while aluminium liner sheets are slightly thicker at 0,5 mm or 0,9 mm. The choice of liner will depend on the required spanning capability, the cladding installation method and the acoustic requirements of the cladding. Where required, the acoustic performance of the cladding, in particular its ability to absorb sound and minimise reverberation, may be enhanced by the use of a perforated liner sheet.

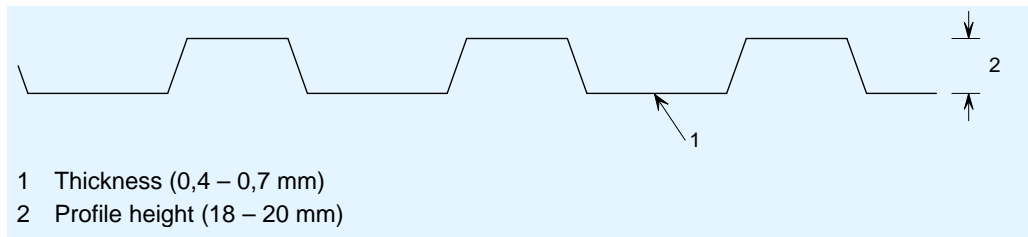


Figure 2.3 Liner sheet profile

The shallow liner sheets are not strong enough to walk on, so it is essential that the insulation, spacer system and weather sheet are installed from boards or access platforms, as illustrated in Figure 2.4. However, they do provide a non-fragile barrier against falling once they have been fully fastened. Where walking access is required, it is common practice to replace the shallow liner profile with a more substantial sheet (i.e. 32 mm to 35 mm trapezoidal profile in 0,7 mm gauge steel).



Figure 2.4 Liner sheet installation progressing into the span of the purlins.

2.2.2 Insulation

The primary function of the insulation layer is to provide a barrier to the flow of heat between the interior of the building and the external environment. The thickness of the insulation layer in roof and wall assemblies has increased significantly in recent years from approximately 80 mm in the 1980s to values approaching 200 mm in 2009. Further increases in thickness are expected over the next few years as the regulations on energy use in buildings become more onerous.

The most common form of insulation in built-up cladding systems is mineral wool quilt, which is favoured due to its light weight, low thermal conductivity, ease of handling and relatively low cost. Rigid mineral wool slabs are available, but are less deformable than mineral wool quilts, giving rise to the

potential for air gaps between the insulation and the profiled metal sheets. Rigid mineral wool slabs are also much heavier than mineral wool quilts, with consequences for the loading on the supporting steelwork and manual handling on site.

2.2.3 Spacer system

The primary function of the spacer system is to support the weather sheet at the required spacing from the liner sheet. The components of the system must, therefore, possess sufficient strength and stiffness to safely transmit the required loading through to the purlins, without excessive deformation. A common form of spacer is a bar and bracket system, as shown in Figure 2.5. The system consists of cold formed steel bars, which provide continuous support to the weather sheet, supported at intervals by steel brackets firmly attached to the purlins through the liner. Many bar and bracket systems also incorporate plastic pads (which act as thermal breaks) in order to minimise thermal bridging. Other types of spacer systems are also available, for example Z spacers supported on thermally insulating plastic blocks.

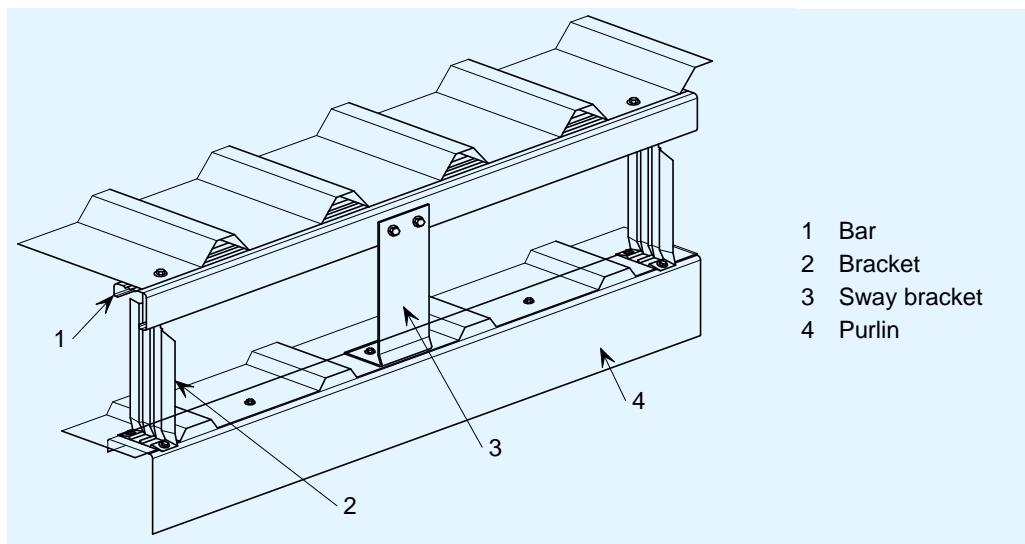


Figure 2.5 Bar and bracket spacer system

2.2.4 Weather sheet

The outer sheet of a double skin built-up cladding system is known as the weather sheet. As the name suggests, its primary function is to protect the building from the exterior climate by forming a weather-tight envelope. However, the weather sheet should also be regarded as a structural element, as it plays an important role in transferring externally applied loads (e.g. from wind, snow and foot traffic) through to the other cladding components, secondary steelwork and the primary load-bearing frame.

The weather sheets are usually made from either steel or aluminium and are available in a wide variety of finishes and colours. Steel weather sheets are manufactured from pre-coated steel coil. Aluminium weather sheets are available in a mill finish or in a range of painted finishes. Detailed requirements for the weather sheets for roof and wall cladding applications are given in EN 14782^[1].

2.2.5 Fasteners

A wide variety of proprietary fasteners are available, which where required, can be watertight. Most fasteners used for metal cladding applications are both self-tapping and self-drilling, although screws which are only self-tapping are also available for use in pre-drilled holes. Fasteners can be used to connect sheeting to supporting steelwork (or other materials) or to connect adjacent sheets. For most fastener applications, a choice between plated carbon steel and stainless steel (typically grade 304 austenitic stainless steel is used) is made. Visible fasteners have the option of factory coloured plastic heads to suit the weather sheet. Further information describing these and other fasteners (e.g. secret fix fasteners) is available from MCRMA Technical Paper No 12 *Fasteners for Metal Roof and Wall Cladding: Design, Detailing and Installation Guide*^[2].

2.3 Insulated (composite or sandwich) panels

Insulated roof and wall cladding panels consist of a rigid layer of insulation sandwiched between two metal skins, as shown in Figure 2.6. The result is a strong, stiff, lightweight panel with good spanning capabilities due to composite action in bending. These panels are commonly used on industrial buildings and retail ‘sheds’ in place of the built-up cladding described in Section 2.2. In this case, the panels span between cold formed purlins or side rails, which in turn span between the primary frame members. However, for commercial buildings, where the secondary steelwork is not needed for restraint purposes, it is quite common for composite wall cladding panels to span directly between the columns.

Standing seam and through-fixed systems are available, with either a trapezoidal weather sheet and shallow profiled liner, as shown in Figure 2.6, or two flat / micro-ribbed sheets. Profiled composite panels are used for roofs to allow rainwater to run off without penetrating the fastener holes, while flat panels are favoured for walls due to their better appearance.

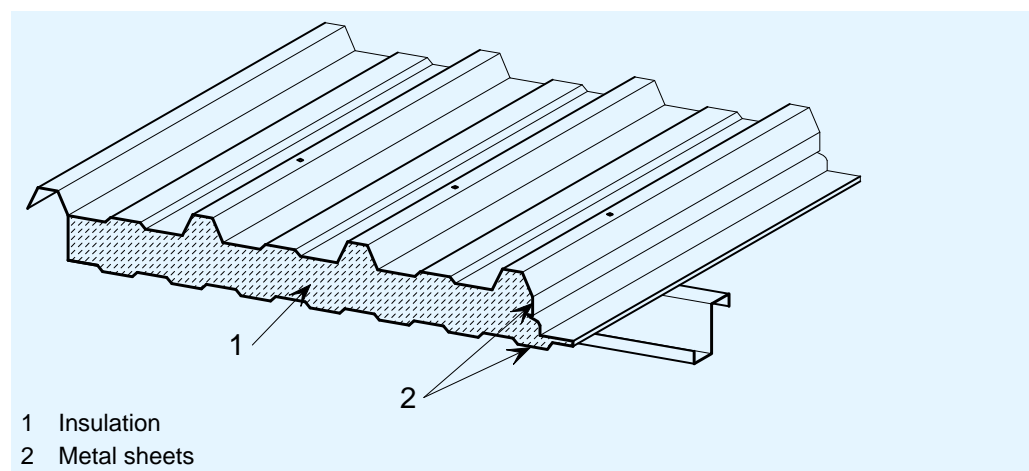


Figure 2.6 Insulated panel

Unlike built-up systems, there is no need for a spacer system, as the rigid insulation is strong and stiff enough to maintain the correct spacing of the sheets. Any loads applied in the plane of the cladding (e.g. down-slope loads

on a pitched roof) are transferred from the external sheet through the two adhesive bonds and the layer of insulation to the internal sheet and the supporting structure.

Polyisocyanurate (PIR) is the most common insulation material used in foam-insulated panels. PIR expands rapidly when sprayed onto the metal profile and bonds to it without the need for an adhesive. This property makes it ideally suited to the type of continuous manufacturing process employed by the larger manufacturers of foam-filled panels. Alternatively, rigid slabs of mineral wool or other insulating materials may be bonded to the metal sheets using an adhesive. This method is commonly used for flat-faced wall panels.

2.4 Standing seam systems

‘Standing seam’ or ‘secret fix’ systems use a specially designed profile for the weather sheet, which incorporates a clipped joint between adjacent sheets. This eliminates the need for exposed fasteners and improves the weather tightness of the cladding system. Consequently, standing seam systems may be used on very low roof slopes (down to 1° compared to 4° for systems with exposed fasteners). Insulated panel systems are also available with a standing seam joint in the weather sheet. Standing seam sheeting can be manufactured from steel or aluminium.

A typical standing seam system is shown in Figure 2.7.

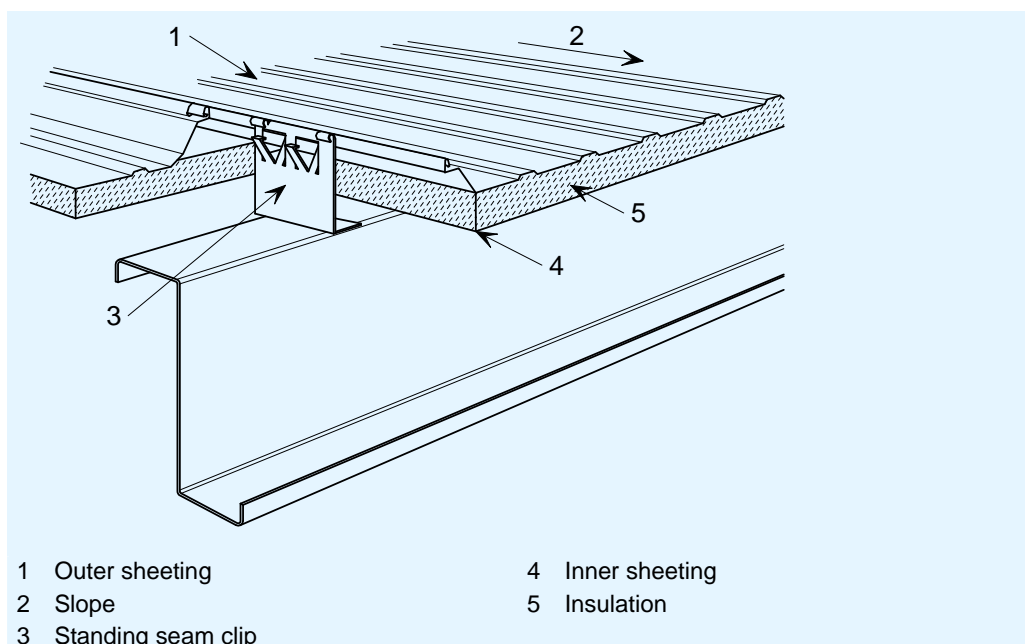


Figure 2.7 Standing seam roof cladding

The disadvantage of this system is that significantly less restraint is provided to the purlins than with a conventionally fixed system. Nevertheless, a correctly fixed liner will provide adequate restraint.

Further information on standing seam cladding systems may be obtained from MCRMA Technical Paper 3 *Secret fix roofing design guide*^[3] and also from ECCS-TC7 Publication 41 *Good practice in steel cladding and roofing*^[6].

2.5 Structural liner trays

Structural liner trays are a popular alternative to composite wall panels. They comprise a deep structural profile into which a slab of insulation is inserted on site. The assembly is completed with the addition of an external profiled metal sheet, as shown in Figure 2.8. Unlike built-up systems, liner trays span directly between the main structural columns, thereby removing the requirement for secondary cladding rails. This is possible because of the depth of the liner tray profile and its resulting bending stiffness. The lack of secondary steelwork therefore can have clear advantages in terms of the speed and cost of the construction process and installation tolerances.

However, consideration should be given to thermal bridging that can exist with liner trays. This issue may be partially overcome by placing an additional layer of rigid insulation on the outside of the tray.

Where plastic design of portal frames is a common design approach, the absence of side rails can create issues when attempting to provide restraint to the inside flange of the columns (e.g. in the hogging region of a portal frame), since traditional knee bracing cannot easily be attached to the liner tray profile.

Structural liner trays can also be specified with perforations where improved acoustic performance is required.

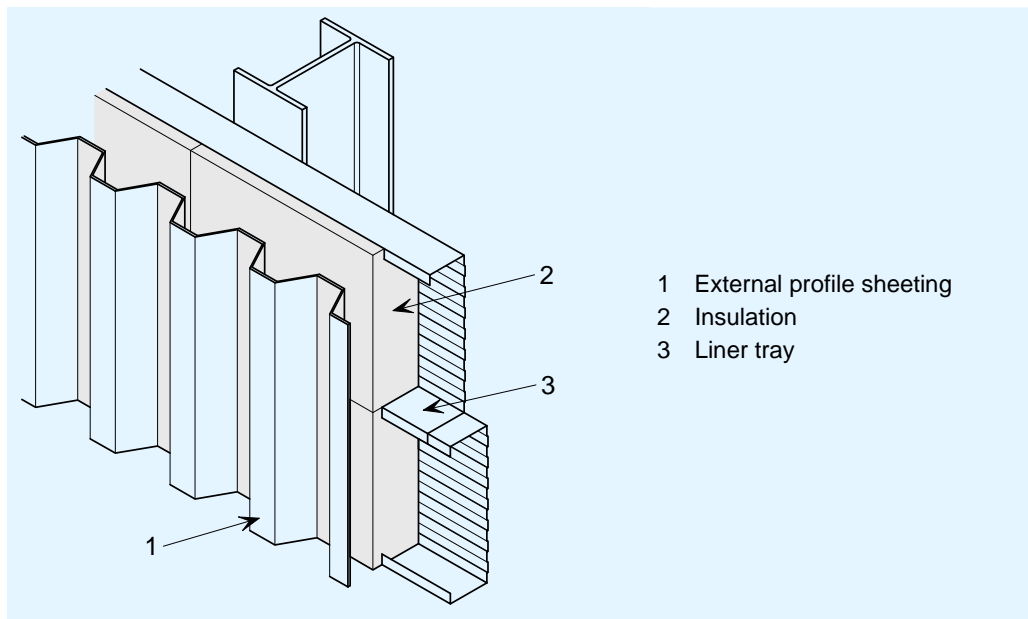


Figure 2.8 Structural liner tray cladding systems

2.6 Structural deck and membrane roof systems

Structural deck and membrane systems provide a long spanning alternative to built-up cladding on cold formed purlins and are especially popular on 'flat' or very low pitch roofs on which a waterproof membrane is required. The roof construction comprises a trapezoidal profiled metal deck of sufficient depth and gauge to span directly between the rafters, roof beams or trusses. A common metal deck typically has a profile height of 100 mm and a steel

thickness between 0,75 mm and 1,0 mm. The deck supports a layer of rigid insulation on top of which the waterproof membrane is placed, as shown in Figure 2.9. The use of a high density rigid membrane permits the loads from foot traffic and snow to be carried through the insulation layer to the structural deck without the need for an external metal sheet or spacer system. The deck is capable of restraining the top of the beam or truss, making it ideal for building designs that have simply supported roof structures. However, structural decks are not suitable for plastically designed portal frames due to the need to restrain the inner flange of the rafter in the hogging region.

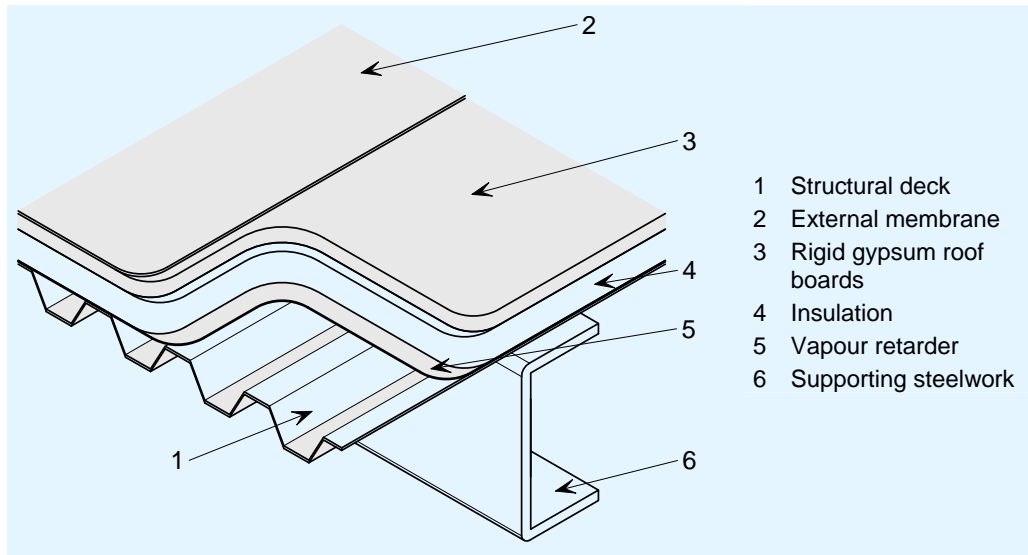


Figure 2.9 Structural deck and membrane cladding system

3 SPECIFICATION OF THE CLADDING

The specification of roof and wall cladding has implications well beyond the aesthetics and weathertightness of the building. The choice of cladding can affect many aspects of the building's performance, from its construction right through to its eventual demolition and disposal. Indeed, the fitness for purpose of the whole building could be compromised if sufficient care is not taken when specifying the cladding. Listed below are the factors that should be taken into consideration when specifying profiled metal cladding systems. Further details on the principal technical considerations are given in Sections 3.1 to 3.8.

- Weathertightness
- Strength and rigidity
- Thermal insulation
- Control of condensation
- Control of thermal movement
- Sound insulation
- Fire resistance
- Appearance
- Durability
- Cost
- Daylighting
- External attachments
- Lightning protection
- Design detailing
- Maintenance, remedial work and renewal.
- Control of air leakage.

Minimum performance requirements for a number of these factors are laid down by legislation in Europe. Other factors, such as appearance and day lighting, may not seem to be as critical from an engineering viewpoint, but might be crucial to the success of the building in terms of the well-being of the occupants and the acceptance of the building by the local community. It should not be forgotten that the cost of the insulated cladding in a typical commercial or industrial building is usually a significant proportion of the overall construction cost, so decisions related to the cladding could influence the economic success or failure of the project. The cladding also has a significant impact on the operational energy requirements and, therefore, the operating costs of the building in service, specifically heating, cooling and lighting.

3.1 Weathertightness

The primary function of the cladding system is to provide a weathertight building envelope, suitable for the intended use of the building. With this in mind, the cladding specifier must give careful consideration to the selection of the cladding components and the detailed design of the system. The location of the building, its orientation and the external climate should all be considered when specifying the cladding. The satisfactory performance of the system also depends on the correct assembly of the components in the factory and/or on site.

In general, roofs are at greater risk of leakage than walls, and this risk increases as the roof pitch decreases. This is an important factor in the design of modern non-domestic buildings, since many have low pitch or flat roofs in order to minimise the volume of empty roof space. Not all types of roof cladding are suitable for use on low pitch roofs. Specifiers must, therefore, pay careful attention to the minimum pitch recommended by the manufacturers, together with the published guidance on detailing and installation.

Trapezoidal metal roof sheets with through fix fasteners are generally suitable for slopes of 4° (7%) or steeper. This 4° limit is critical to the performance of the cladding and should take into account deflections in the supporting steelwork and localised cladding deformations that may lead to ponding. Where the primary steelwork is precambered to off-set the deflections due to permanent actions, great care must be taken to ensure that excessive precamber does not result in local high points, as these could also cause ponding. For shallower pitches, down to 1,5° (1,5%), a secret fix system with no exposed through fasteners, special side laps and preferably no end laps should be used. Secret fix systems may also be used on steeper roofs where increased reliability is desired.

For low pitch roofs, ponding is a potential problem that must be considered at the design stage in order to avoid the deleterious effects of prolonged soaking and the increased loading due to the weight of the water. Where ponding occurs on rooflights, there is also the additional problem of the water leaving dirt deposits as it evaporates.

Side and end laps in profiled sheeting are weak points in the building envelope, where the wind and rain could potentially penetrate the cladding. The design and construction of the laps is therefore critical to the weathertightness of the cladding system. End laps typically consist of two continuous butyl sealant strips, which are compressed to form a weathertight seal by the clamping action of the fasteners. The pitch of fasteners required to achieve a proper seal will depend on the profile geometry, but one fastener per trough is common. A typical side lap between trapezoidal sheets is formed by overlapping the profiles with a strip of butyl sealant positioned on the weather side of the fastener to provide a weather-resistant seal. The side laps should be stitched at 500 mm centres or closer using steel stitcher fasteners. Further information on side and end lap details is given in MCRMA Technical Paper No. 6 *Profiled metal roofing design guide*^[4] and Technical Paper No. 16 *Guidance for the effective sealing of end lap details in metal roofing constructions*^[5]. Reference can also be made to ECCS-TC7 Publication 41 *Good practice in steel cladding and roofing*^[6].

3.2 Building appearance

The choice of wall and roof cladding can have a significant impact on the appearance of a building. The following factors are particularly important:

- Profile shape
- Colour
- Fasteners.

The profile shape can have a significant impact on the appearance of a building due to its effect on the perceived colour and texture of the cladding (caused by the reflection of light). The orientation of the cladding (ribs horizontal or ribs vertical) will also influence the appearance of the building, due to the effects of shadow and reflection. A potential disadvantage of horizontal ribs is that they tend to suffer from an accumulation of dirt over time, unless the cladding is cleaned regularly. Where the location and function of the building demand a smooth flat exterior, insulated wall panels with flat facing sheets may be used, however, it should be noted that any defect on the surface will be readily noticeable.

The steel from which profiled cladding sheets are made is available pre-coated in a wide range of colours and textures, allowing architects to choose a finish that best suits the location and function of the building. In choosing the finish, the architect should bear in mind the influence of the profile shape on the overall appearance by making an allowance for the effects of reflection and shadow on the perceived shade of colour.



Figure 3.1 Typical wall cladding with a mix of flat panels and profiled sheeting

The overall appearance of the building can also be affected by the choice of fasteners, especially on wall cladding or on steeply pitched roofs. Cladding specifiers should, therefore, give careful consideration to the size, shape, colour and locations of the fasteners and washers. Fasteners with factory coloured plastic heads are available to match the colour of the weather sheet. Where exposed fasteners are considered detrimental to the appearance of the building, the architect may consider the use of secret fix insulated panels or standing seam systems in which all fasteners are hidden from view. Further information on fasteners is available from MCRMA Technical Paper No 12 *Fasteners for Metal Roof and Wall Cladding: Design, Detailing and Installation Guide*^[2].

3.3 Thermal performance

3.3.1 Energy consumption

The increase in public awareness of global climate change and the association with human activity has placed energy consumption and carbon dioxide emissions high on the political agenda. Under the terms of the Kyoto Protocol, European countries are now legally bound to reduce their carbon dioxide

emissions and meeting this obligation will require significant changes in many sectors of industry, especially construction.

A significant proportion of carbon dioxide emissions in Europe is related to the operational energy requirements of buildings (heating, lighting, ventilation etc.). This issue is addressed by European Directive 2002/91/EC: *Energy performance of buildings*^[7]. Although many factors influence a building's energy efficiency, the thermal performance of the building envelope is significant. Consequently, it has been sought to reduce energy consumption by improving the thermal performance of the cladding and associated components.

The main sources of heat loss through the building envelope are shown in Figure 3.2.

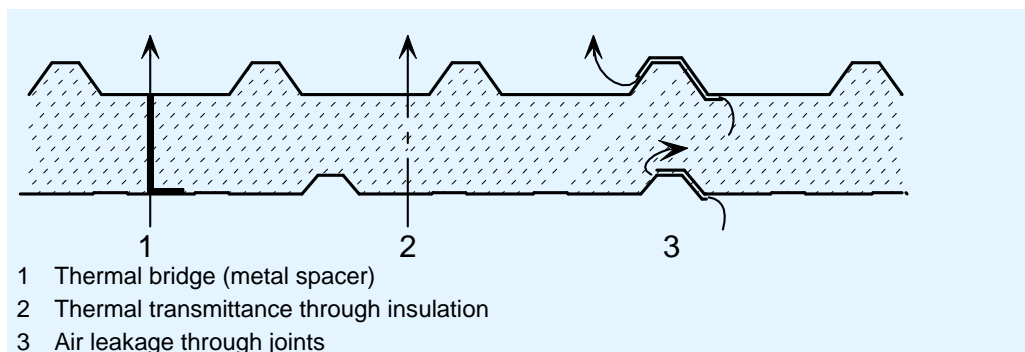


Figure 3.2 Main sources of heat loss through the building envelope

3.3.2 Thermal transmittance

Thermal transmittance through the building envelope can be a significant source of energy loss within a building, especially if there is insufficient insulation. One measure of thermal transmittance is the “U-value”, which is defined as the rate of heat transfer through an element of the building envelope (e.g. a wall, window, section of roof or rooflight) per square metre. The SI unit for the U-value is W/m^2K . For an individual component such as a cladding panel, the elemental U-value depends on the conductivity and thickness of the insulation, the profile shape and the presence of thermal bridges. Cladding and insulation manufacturers usually quote U-value for their products for a range of insulation thicknesses. Alternatively, the U-value of a given built-up of envelope may be calculated using software.

National regulations generally specify maximum U-values. These are often the weighted average (or similar “overall” figure) for the whole of the roof or wall, with maximum values for individual elements such as doors. The individual elements tend to have much higher U-values than the cladding.

Typical limiting U-values are shown in Table 3.1.

Table 3.1 Limiting U-values

Element	Area weighted average (Wm^2K^{-1})
Wall	0,35
Roof	0,25
Window	2,2
Pedestrian door	2,2
Roof ventilator	6

Over recent years, the drive to improve the energy performance of buildings has resulted in a significant reduction in the U-values for building envelope elements, resulting in a considerable increase in insulation thickness. This has had important implications for the structural performance of the cladding system and its relationship with other structural elements. Of particular concern to the structural engineer are the increased depth and weight of the cladding and its ability to adequately restrain the purlins or side rails. Inevitably the trend will continue towards improved thermal efficiency. However, the diminishing returns obtained from further reductions in U-values means that in future more emphasis is likely to be placed on airtightness and the performance of mechanical services, rather than ever increasing insulation thicknesses.

While some countries have adopted the U-value as the preferred means of quantifying the performance of the envelope, elsewhere the chosen parameter is the R-value or thermal resistance. The R-value is simply the reciprocal of the U-value and the points noted in the preceding paragraphs are equally applicable in these countries.

Typical U-values for different cladding systems are shown in Table 3.2.

Table 3.2 Typical U-values for cladding

Element	U-value (Wm^2K^{-1})
Built-up system, 180 mm insulation	0,25
Built-up system, 210 mm insulation	0,2
Composite panel, mineral fibre, 120 mm	0,34
Composite panel, mineral fibre, 150 mm	0,27
Composite panel, PIR, 60 mm	0,33
Composite panel, PIR, 100 mm	0,20

3.3.3 Thermal bridges

Thermal bridges are areas or components within the roof or wall cladding assembly whose thermal insulation properties are lower (often much lower) than those of the surrounding material, thereby permitting local high heat flows through the building envelope. A common example of a thermal bridge would be an all-metal spacer in a built-up cladding system. In general, all metal components will act as thermal bridges, because of their high thermal conductivity, unless specific measures are taken to interrupt the heat flow by introducing a layer of thermal insulation. Thermal bridging increases the heat

loss from a building, thereby increasing the operational energy requirement. It can also lead to a reduction in the internal surface temperature of the cladding, causing condensation to form under certain conditions.

3.3.4 Airtightness

The airtightness of a building is central to the requirements of the building regulations and is likely to become even more important as architects strive to improve the thermal performance of the building envelope without significant increases in insulation thickness. The airtightness of a building is quantified in terms of its air permeability, which is defined as the volume flow rate of air per square metre of building envelope and floor area at a given pressure. The maximum permissible air permeability for a given building will depend on a number of factors including the requirements of the building regulations, the specified CO₂ rating for the building and the means by which this rating is to be achieved (e.g. the architect may specify a very low level of air permeability as an alternative to increasing the thickness of insulation). In many countries, achievement of the specified air permeability must be demonstrated by post-construction testing.

3.4 Interstitial condensation

Interstitial condensation occurs within the layers of the cladding construction and is due to warm moist air from within the building penetrating the liner and condensing on the cold outer sheet and other components. The severity of the problem will depend on the relative humidity of the air within the building, the external air temperature and humidity, and on how well the liner is sealed. Buildings in cold climates and those containing swimming pools, laundries or other similar applications are most at risk, as are cladding systems that incorporate a perforated liner and separate vapour control barrier. In extreme cases, the condensation could result in corrosion of steel components within the roof assembly or in wetting of the insulation.

Recommendations for avoiding interstitial condensation are usually given in National Standards.

3.5 Acoustics

Depending on the application, acoustic performance can be an important consideration when specifying roof and wall cladding. There are three categories of acoustic performance to consider, as illustrated in Figure 3.3.

3.5.1 Airborne sound transmission

Where there is a need to limit the passage of sound through the building envelope, the cladding specifier needs to consider the Sound Reduction Index (SRI) of the cladding. The SRI is a measure of the reduction in sound energy (in decibels) as sound passes through a construction at a given frequency. The acoustic performance of a particular cladding system will depend on the insulation material, the weather sheet and liner sheet profiles and the method of assembly. Of these, the insulation is the dominant factor, with soft mineral wool insulation giving better sound insulation than rigid board (dependent upon density).

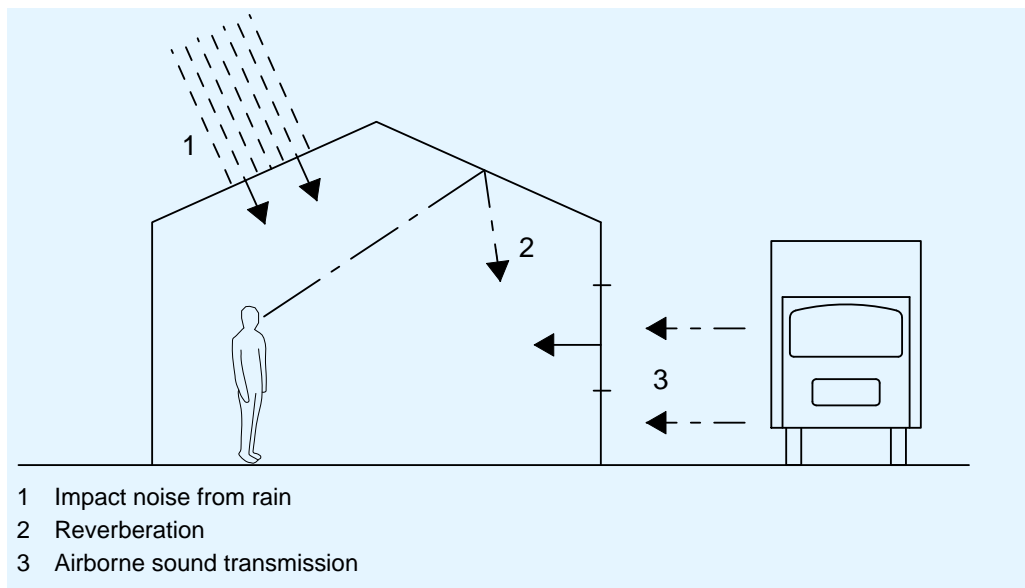


Figure 3.3 Categories of acoustic performance

3.5.2 Reverberation

In certain applications, such as offices or residential accommodation, internal acoustic performance might be critical to the functionality of the building. Of particular interest is the reverberation caused by sound waves reflecting off hard internal surfaces, including elements of the building envelope. Typically, the internal finishes of the building will be used to limit reverberation, but architects may also take advantage of the sound absorbing properties of the cladding insulation layer by replacing the standard liner sheet with a perforated liner. Where the envelope consists of insulated sandwich panels, it is not uncommon to install a perforated liner and a layer of mineral wool insulation on the inside of the envelope in order to reduce reverberation.

3.5.3 Impact noise

The noise created by the impact of rain or hail on metal roof sheeting can sometimes create a nuisance for the building occupants. Where impact noise is considered to be important, it can sometimes be reduced by placing a flexible insulation layer directly below the outer sheet to act as a damper.

3.5.4 Noise associated with building services equipment

Consideration should also be given to attenuating noise emanating from services equipment. These include providing sound enclosures for noise prone machinery and/or including equipment supports with dampers. Reduction of noise from services is particularly appropriate in industrial buildings.

National regulations may specify acoustic performance standards in terms of reducing noise coming into a building – but these are often for residential buildings. 65 dB is generally considered a suitable indoor noise level in industrial buildings, whereas 50 to 55 dB is considered a suitable indoor ambient noise level for commercial, retail and leisure buildings. For industrial buildings, noise break-out is usually a greater concern. Local regulations may

specify acoustic requirements to reduce noise break-out from within a building (for example if the building is sited adjacent to a residential area).

Cladding system manufacturers will be able to provide acoustic performance data for different constructions, and be able to recommend a system to meet the specification.

A built-up system comprising an inner and outer sheet of pre-finished steel with mineral wool insulation generally achieves over 40 dB of sound reduction. Rock mineral wool has a greater density than glass mineral wool, and generally improves the sound insulation. Sound insulation can be improved by including a layer of dense acoustic mineral wool slab, in addition to the insulation quilt.

In general, factory insulated foam filled composite systems are not as effective as built up systems, because of the low mass of the foam core and the direct coupling of the inner and outer skins.

The sound reduction index R_w for various systems is shown in Table 3.3. A higher index indicates higher sound reduction.

Table 3.3 Sound reduction index for typical cladding systems

Cladding type	Sound reduction index R_w
Built-up system – with rock wool and acoustic insulation	47
built-up system with rock wool	45
built-up system with glass mineral wool	41
composite panel with mineral wool	31
composite panel with foam	25
single skin	24

3.5.5 Further information

Further guidance is available in MCRMA Technical paper No. 8 *Acoustic design guide for metal roof and wall cladding*^[8] and also from ECCS-TC7 Publication 41 *Good practice in steel cladding and roofing*^[6].

3.6 Fire performance

In general, any concerns about the reaction of cladding to fire are far outweighed by concerns about the smoke and gas generated by the contents of the building, not the envelope.

Single sheet cladding is considered to contribute significantly to any fire. Single sheet cladding is generally assumed not to make any contribution to fire resistance, although in practice some integrity and resistance will be provided. Single skin sheeting is generally not used on boundaries, when prevention of fire spread to neighbouring structures is important.

Built-up systems that use mineral wool or glass wool insulation are not considered to contribute significantly to any fire. Built-up systems may also be

specified to meet the requirements for external envelope applications. Composite panels that use mineral wool fall in the same category.

Factory insulated composite panels may use polyurethane (PUR) or polyisocyanurate (PIR). It is generally considered that PIR panels have improved performance in fire compared to PUR panels. The core of either type of panel is difficult to ignite. Panels with appropriate joint designs with either PUR or PIR filling do not present an undue fire risk, and PUR panels are the standard core in many European countries.

Polystyrene filled panels present a fire risk, and their use is diminishing.

3.7 Durability

All cladding systems suffer a certain degree of degradation over time due to moisture, atmospheric pollution and UV radiation. However, the cladding specifier can have a considerable influence on the long term performance of the cladding through careful selection of materials and good detailing. Once in service, regular maintenance will prolong the life of the building envelope.

The metal from which the weather sheet is made is available with several types of coating with a wide variety of colours and finishes. Guidance on the expected design lives of these coatings is available from MCRMA Technical paper No. 6 *Profiled metal roofing design guide*^[4] and also from ECCS-TC7 Publication 41 *Good practice in steel cladding and roofing*^[6]. It is worth noting that the colour of the coating has a very significant impact on its design life. Light colours reflect thermal radiation more efficiently than dark colours, resulting in lower surface temperatures and a reduction in the degradation experienced by the coating.

When detailing the building envelope, particular attention should be given to the avoidance of water and dirt traps by specifying suitable slopes and end laps. Careful detailing is needed at the external interfaces to avoid the ingress of water and at the internal interfaces to prevent water vapour from within the building entering the cladding assembly (resulting in interstitial condensation).

In order to ensure that the building envelope remains fully functional throughout its design life, it is important that it receives regular maintenance, including inspection, removal of debris, cleaning and repair of damage. Since maintenance usually involves access by workmen, often carrying equipment, it is essential that this is allowed for in the design of the building envelope and the supporting structure. The need for maintenance may be greatly reduced by specifying a coating for the weathersheet with a 'maintenance free' guarantee for the expected design life of the cladding (typically 20 to 30 years). Such coatings can provide significant benefits to the client in terms of whole life costs and improved safety.

3.8 Structural performance

Metal cladding systems are required to carry externally applied loads, such as snow and wind loading without deflecting excessively or compromising the other performance requirements. The individual characteristic loads (actions)

should be obtained from the appropriate part of EN 1991^[9], taking into account the building geometry and location as applicable. These individual actions should then be combined using the appropriate safety factors from EN 1990^[10] to obtain the load cases used in design.

3.8.1 Actions

Permanent actions

For most industrial and commercial applications of metal cladding technology, the only permanent action for which the roof cladding needs to be designed is its own self-weight, including the weight of the insulation. Typical weights of insulated panels and built-up cladding systems are given in Table 3.4. For information on specific cladding products, designers should consult the technical literature available from manufacturers or suppliers. For wall cladding, it is not normally necessary to consider permanent actions, since the self-weight acts in the plane of the cladding. However, where a rainscreen system is attached to the outer face of the cladding panel or assembly, it will be necessary to consider the impact of the rainscreen system weight when specifying the fasteners.

Table 3.4 Typical cladding system weights

System	Insulation	Depth*	Sheet thickness		Weight kN/m ²
			Inner	Outer	
Built-up	Mineral wool	180 mm	0,4 mm	0,7 mm	0,16
Built-up	Mineral wool	180 mm	0,7 mm	0,7 mm	0,20
Insulated Panels	PIR	80 mm	0,4 mm	0,5 mm	0,12

* The depths chosen in Table 3.1 correspond to a U-value of 0,25 W/m²K for typical cladding systems using the insulation shown.

Variable actions

In addition to its self-weight, the roof cladding must also be designed for the following variable actions as specified in the appropriate parts of EN 1991:

- Access for cleaning and maintenance
- A uniformly distributed load due to snow over the complete roof area. The value of this load will depend on the building's location
- Asymmetric snow load and loading due to snow drifts
- Wind pressure and suction.

Care should be taken when 'green' roofs are specified, as they tend to be considerably heavier than traditional metal roofs and, in the case of roof gardens, must be designed for the presence of garden furniture and people.

Wall cladding should be designed for wind loading according to EN 1991-1-4^[9]. Positive wind pressure and wind suction will need to be considered, with special attention paid to the areas of high wind suction close to the corners of the building. The wind suction design case is often governed by the resistance of the fasteners connecting the cladding panels or sheets to the supporting steelwork.

3.8.2 Deflections

The cladding must be capable of carrying the specified design loads without deflecting excessively, if the other performance requirements such as weathertightness, airtightness and durability are to be achieved. The predicted deflections are normally calculated for the unfactored variable actions only. Loading at the construction stage is not normally included in the serviceability load cases and is not normally considered when specifying cladding systems. However, care must be taken on site to avoid excessive local deflections, especially those caused by concentrated loads such as foot traffic or stacked materials on roof liner sheets, as these could result in permanent damage to the cladding. Typical deflection limits imposed on the cladding are dependent on the loading regime considered (imposed load only or permanent plus imposed loading), the location (wall or roof) of the structural component and whether a brittle material is present. Deflection limits may be specified by National regulations. Common deflection limits are:

- Span/150 for wall cladding, spanning between secondary steelwork
- Span/200 for roof cladding, spanning between purlins
- Span/180 for purlins or side rails.

3.8.3 Use of safe load tables

The manufacturers of profiled metal sheeting and insulated panels provide safe load tables for their products, which may be used either to select a suitable profile or, where the profile has already been chosen, to determine the maximum permissible purlin spacing. It is important to note that the load tables often assume that the loading is uniformly distributed and that safe working loads are usually specified. If in doubt, specifiers should seek guidance from the cladding manufacturers.

4 COLD ROLLED SECONDARY STEELWORK

For steel portal framed industrial type buildings with low pitch roofs (5 to 10 degrees), the cladding panels or sheets are normally supported by a system of light steel purlins and side rails spanning between the rafters and columns respectively. See Figure 4.1 showing secondary steelwork in the roof where the purlins span between the rafters of the main frame. The primary function of these secondary members is to transfer load from the cladding to the primary steel frame, including cladding self-weight, wind loads and, for roofs, imposed loads due to snow and maintenance access. The purlins and side rails may also be used to provide restraint to the rafters and columns and to transfer horizontal loads into the bracing system.



Figure 4.1 Purlins spanning between rafters in the roof

This Section presents guidance on some of the key issues relating to the use of cold formed purlins and cladding rails.

4.1 Purlin and side rail options

Purlins and side rails are generally cold formed light gauge galvanized steel members, supplied as part of a proprietary cladding support system, together with fittings, fasteners and other associated components.

4.1.1 Section options

Purlins and side rails are available in a variety of shapes and a wide range of sizes. The depth of the section typically lies between 120 mm and 340 mm, with the profile thickness varying between 1,2 mm and 3,2 mm. Some of the more common section shapes are shown in Figure 4.2. Purlins and side rails, because of their high length/thickness values, are typically classed as Class 4

sections as defined in EN 1993-1-3^[11], hence section properties will be need to be based on effective values (reduced gross properties).

Further information on these sections may be obtained from the manufacturers' technical literature.

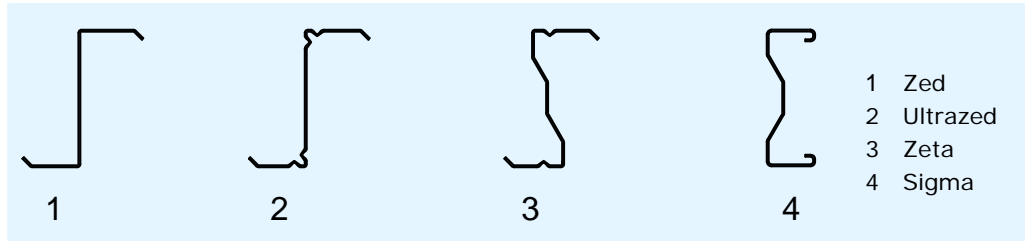


Figure 4.2 Common types of purlin

4.1.2 Purlin and side rail layout options

Most manufacturers produce guidance on typical purlin layouts that are efficient for various situations. These layouts are governed by such aspects as maximum purlin length (generally not more than 16 m for transport and site access reasons) and the ability to provide semi continuity by the use of sleeves or overlaps for maximum efficiency. The most commonly used layouts are shown in Figure 4.3 to Figure 4.7. Specifiers seeking further information on when and how to use a particular layout should consult the purlin manufacturers for detailed information relating to their specific systems. In any event, the purlin manufacturer should be consulted before the layout is finalised.

Single-span lengths - sleeved system

In sleeved systems, each purlin is the length of a single span but sleeves are provided at alternate supports so that each purlin is effectively continuous across two spans (Figure 4.3). At the penultimate support, sleeves are provided at each purlin, to provide semi continuity and additional strength in the end bay. This system is considered to be the most efficient for buildings with bay centres between 5 m and 7 m. Heavier sections can be provided in the end bay if necessary.

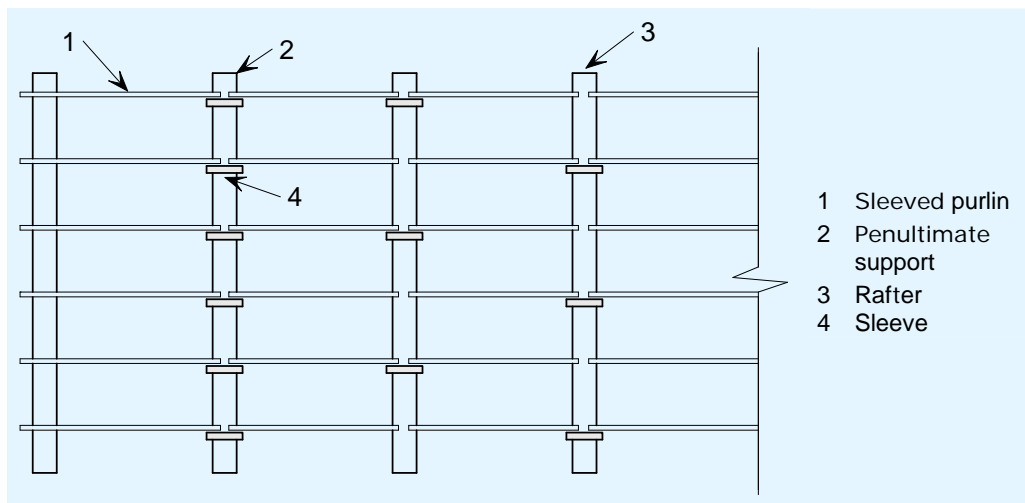


Figure 4.3 Single-span lengths – sleeved system

Single-span lengths - butted system

Single-span butted systems have a lower capacity than the other systems, but are simpler to fix either over the rafters or between rafter webs (Figure 4.4). This layout may be used for small buildings with close frame centres, such as agricultural applications.

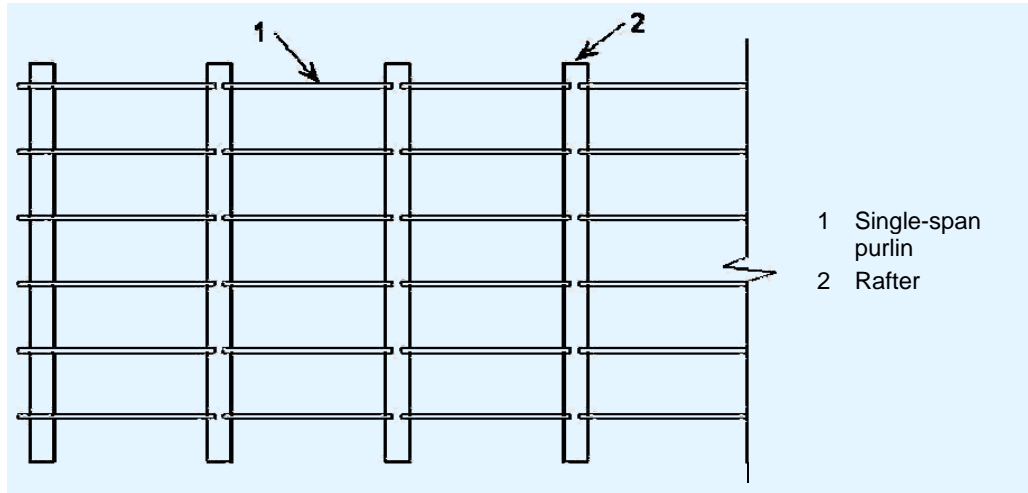


Figure 4.4 Single-span lengths - butted system

Single-span lengths - overlapping system

An overlapping system provides greater continuity and can be used for heavy loads and long spans (Figure 4.5). It is best suited to buildings with a large number of bays.

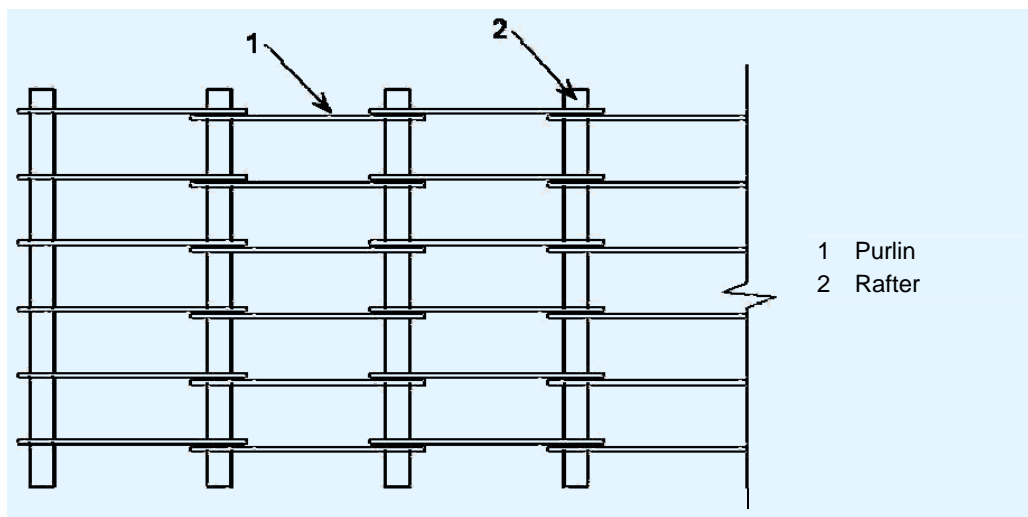


Figure 4.5 Single-span lengths - overlapping system

Double-span lengths – non sleeved system

In this system, the double-span lengths are staggered (Figure 4.6). Sleeves are provided at the penultimate supports to ensure semi continuity. The capacity will generally be less than for the equivalent double span sleeved system, but double-span purlins use fewer components and lead to faster erection. This system is limited to bay sizes less than 8 m, for reasons of transport and erection of the purlins.

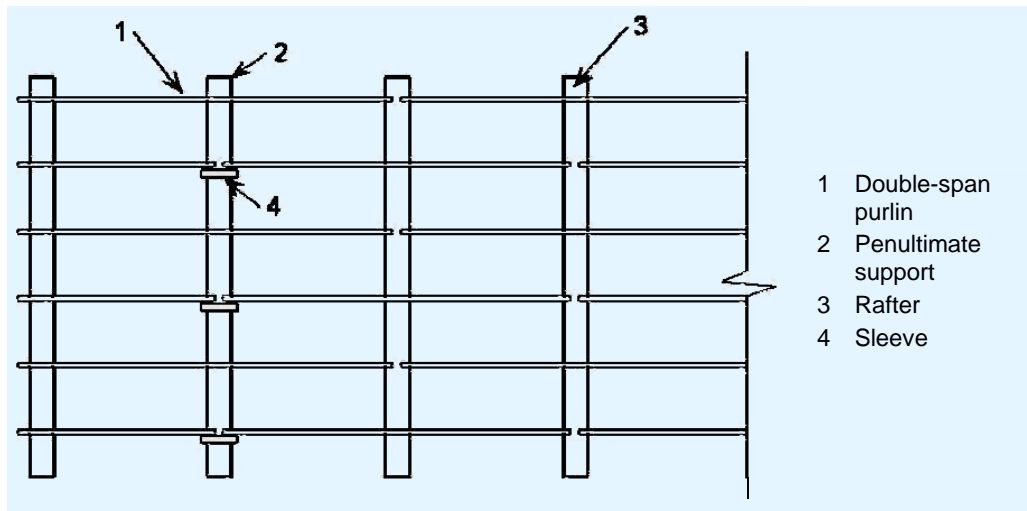


Figure 4.6 Double-span lengths – non sleeved system

Double-span lengths - sleeved system

In double-span sleeved systems, the double-span lengths are staggered and sleeves are provided at alternate supports (Figure 4.7). Sleeves are provided to every purlin at the penultimate support to ensure semi continuity. A double span sleeved system has a slightly higher capacity than the double-span non-sleeved system and has the advantages of semi continuity at all sleeve positions. This system is limited to bay sizes less than 8 m, for reasons of transport and erection. Heavier purlins can be provided in the end bays, if necessary.

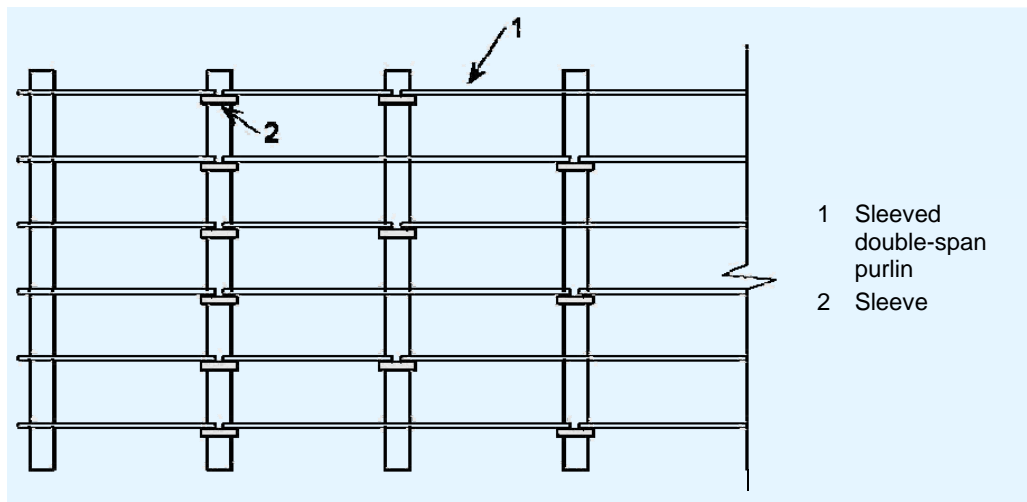


Figure 4.7 Double span lengths - sleeved system

4.1.3 The use of anti-sag rods for purlins

Anti-sag rods are small rods or angles that are bolted or clipped between the purlins. A typical arrangement is shown in Figure 4.8; other systems are also available. When used, they are commonly placed either at mid-span or at third points along the purlin and serve the following functions:

- They provide restraint to the purlins against lateral-torsional buckling under wind uplift conditions

- They provide restraint to the purlins in the construction condition (before the installation of the cladding)
- They provide additional support to the down-slope component of the applied loads
- They help to maintain the alignment of the purlins.

The anti-sag rods are assisted in these functions by eaves beam struts and apex ties, both of which are also illustrated in Figure 4.8.

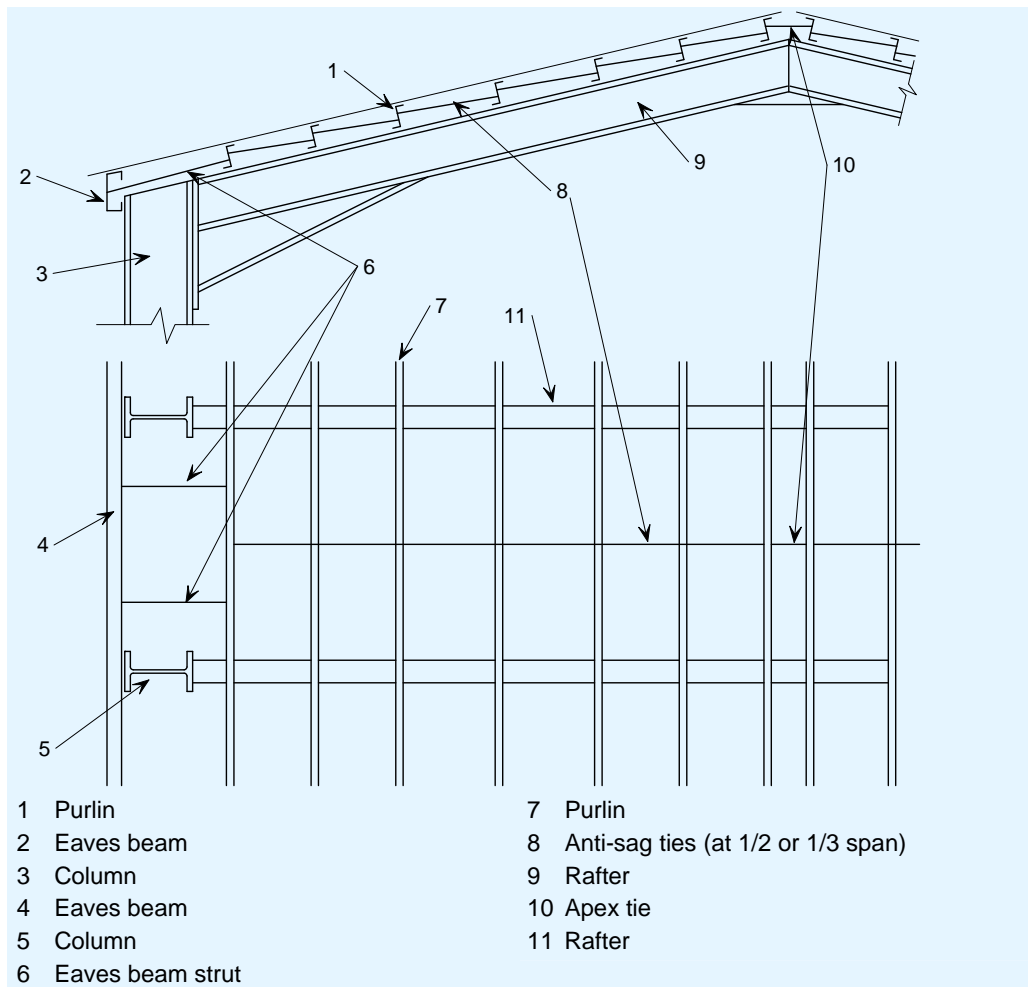


Figure 4.8 Typical anti-sag ties and eaves beam strut layout

The need for anti-sag rods is dependent on a number of factors, including the chosen purlin section, the spacing between the purlins, the span of the purlins and the magnitude of the applied loads. Advice on this issue may be obtained from the purlin manufacturers' technical literature. In some instances, the specifier may have a choice between the use of anti-sag rods or the selection of a heavier purlin that does not require intermediate restraint or support. There is clearly a trade-off between the cost of a heavier purlin section and the time (and corresponding cost) associated with the installation of additional components.

Anti-sag rods only provide restraint at discrete locations along the span of the purlin. The purlins should only be considered to be 'fully' restrained under

gravity loading in the finished condition, when continuous restraint is provided to the compression flange of the purlin by the cladding.

4.1.4 The use of side rail supports for wall cladding

Support for wall cladding is provided by a framework of horizontal cladding side rails that span between the columns of the building's primary steelwork. Vertical restraints are connected to the side rails at discrete locations (similar to the anti-sag rods in roofs). These restraints prevent the occurrence of lateral-torsional buckling (due to bending of the side rails under wind suction loading) and also prevent the side rails from sagging under the weight of the cladding and its supporting steelwork. These vertical restraints are typically light gauge steel sections (tubes, angles or channels) or steel bars/rods.

In order to channel the forces generated in the side rail supports efficiently to the primary structure (columns) and to prevent the side rails from sagging prior to the installation of the cladding, it is customary to provide a vertical braced bay arrangement between the lowest two side rails, as shown in Figure 4.10. These bracing members operate in tension, so it is common to use steel wires rather than cold formed light gauge steel sections. To restrict the forces in the tie wires, it is common practice to restrict the angle of the tie wire to the cladding rail to a minimum of 25° or 30° (refer to the manufacturers' recommendations). With this restriction imposed on the diagonal tie wires, the number of side rail supports is predetermined, based on the spacing of the side rails and the spacing of the columns.

For column spacings up to 6 m with a typical side rail spacing of 1,8 m, a single central vertical restraint will normally be sufficient (see Figure 4.10). However, for greater column spacings, two or even three vertical restraints may be required. In many cases, the uppermost side rail is connected to the eaves beam. This arrangement will reduce the forces in the tie wires, but the additional force in the eaves beam will need to be considered when this member is sized. It is also worth noting that, once installed, the cladding will stiffen up the wall substructure and transfer a significant proportion of the vertical load to the columns by diaphragm action. The cladding will also fully restrain the side rails against lateral-torsional buckling in the sagging case and will provide partial restraint in the hogging case.

4.1.5 Cleats

Purlins are attached to rafters using cleats that are usually welded to the rafter in the shop before delivery to site. However, the use of bolted cleats (see Figure 4.9) is becoming popular due to savings in transportation (as the rafters stack more compactly) and the opportunity they present to adjust the alignment of the purlins on site (with beneficial consequences for the installation of the cladding). The cleats are often provided by the purlin manufacturer, in which case it is likely that they will have been designed specifically for that design of purlin. However, generic bolted cleats made from an angle section or simple flat plates welded to the rafter may also be used in many cases, either unstiffened or stiffened.

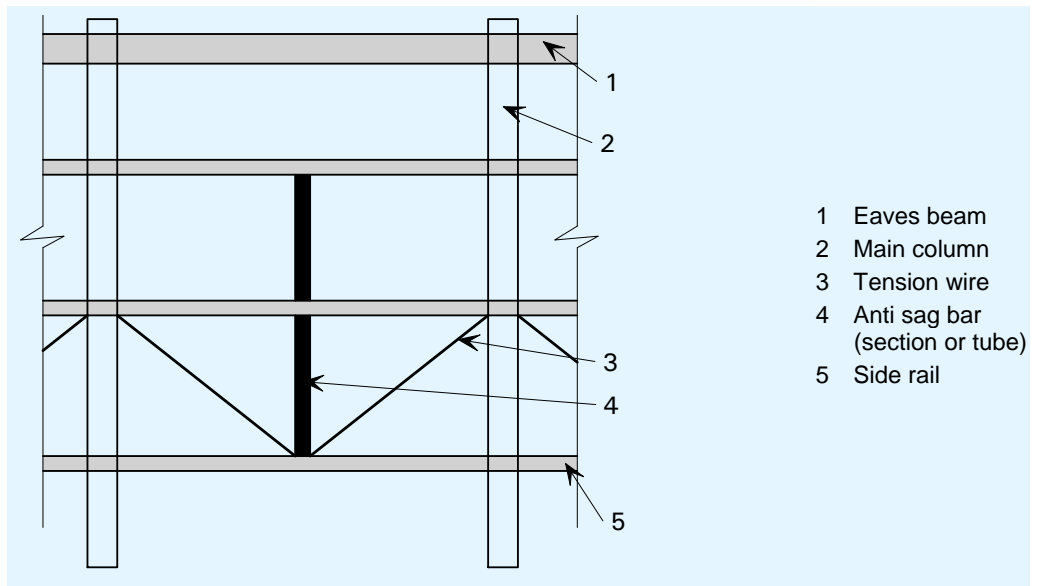


Figure 4.9 Cleat supporting a purlin using a bolted connection

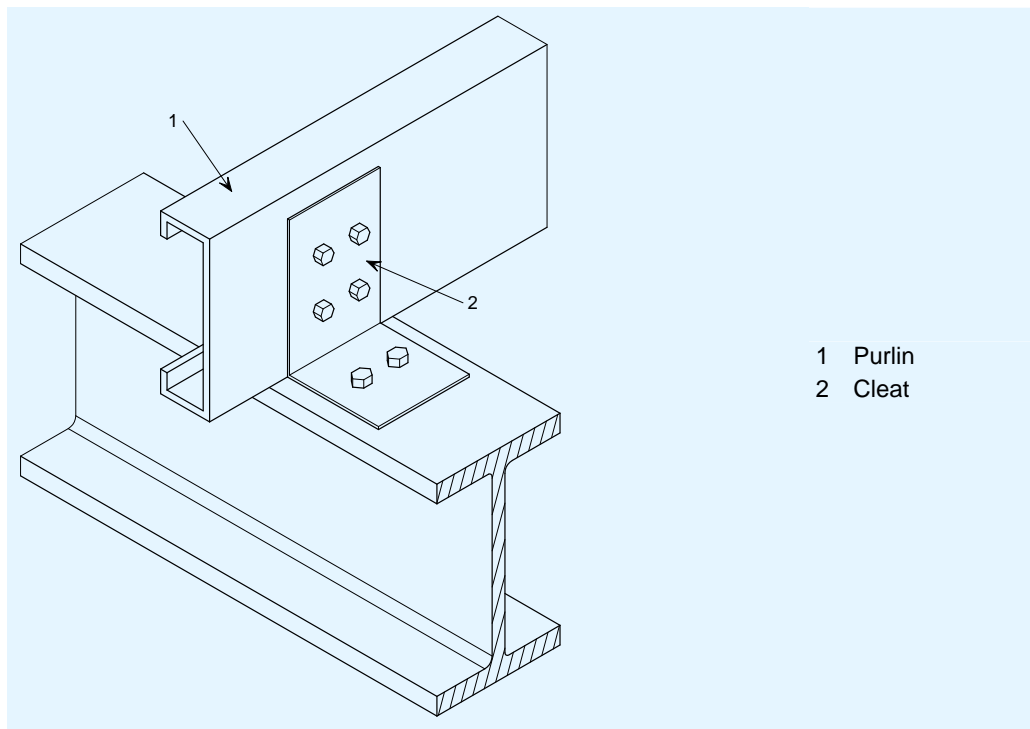


Figure 4.10 Side rail support for wall cladding

4.2 Loading

The purlins and cladding rails need to be designed to carry all of the loads applied to them from the cladding and to transfer these loads into the structural frame. These loads will include the permanent actions due to the weight of the cladding and secondary steelwork together with the variable actions described in Section 3.7.1. It will usually be acceptable to consider these actions as acting uniformly over the purlins, but account must be taken of high local forces such as the wind suction forces close to the edges of the building. In addition to the cladding loads, the purlins may also be required to support the weight of

services or suspended ceilings. The structural engineer responsible for specifying the purlins will frequently play little or no part in the specification of the services or ceilings. Nevertheless, it is important that an accurate estimate of these loads is obtained together with the nature of the loading (whether concentrated or distributed), since they could form a significant proportion of the overall gravity loading on the purlins. Particular care should be taken where the purlins are required to support concentrated loads. Gutters and their supporting structure require special attention, as the loads associated with them are often very high. Designers need to consider the weight of the gutters plus that of their contents (water or snow). Specific information on the specified gutter system should be sought from the gutter manufacturers.

During the construction stage, the purlins may still be required to carry significant gravity loads, but without the benefit of any restraint provided by the cladding. The magnitude of the construction load will depend largely on the cladding installation procedure and the materials, plant and labour used. The cladding installation sequence, in particular, can have a significant effect on the buckling resistance of a purlin, due to its influence on the unrestrained length of the purlin and the location of the load within the span. It is therefore essential that the designer takes account of the proposed method of working when specifying the purlins. Preferably, this should be achieved by dialogue between the roofing contractor and the designer at the time of the purlin specification.

4.3 Deflections

The deflection limits for the purlins and side rails are generally governed by the choice of roof and wall cladding, since the governing factor is the ability of the cladding to deflect without compromising weathertightness, airtightness, non-fragility or any other performance requirement. In general, the greater the flexibility of the cladding, the larger the allowable purlin or side-rail deflection. In this respect, profiled metal cladding systems are far more tolerant of deflections than brittle materials such as masonry. By contrast, windows are often critical and further guidance should be sought from the glazing manufacturers.

Excessive deflection under purlin or rail self-weight, or under the action of construction loads prior to the fixing of the cladding, can lead to difficulties for the cladding installation. This should be addressed by careful consideration of the likely construction loading and by specifying a method of cladding installation that avoids overloading the unrestrained purlins. Gutters are especially sensitive to deflections, due to the need to avoid backfalls.

4.4 Purlin and side rail selection

The major purlin and cladding rail suppliers have invested heavily over many years in the development and testing of their systems and all publish design guidance and load/span tables for their products. In many cases, design software is also available. Thanks to these design tools, the structural engineer is spared the complexities of the design of light steel members and can simply select the most suitable section from the available range. However, specifiers

should note that in using the load/span tables they are automatically accepting the assumptions made by the purlin and cladding rail manufacturers, including assumptions regarding the level of restraint provided by the cladding to the supporting steelwork. If in doubt, the secondary steelwork specifiers should contact the manufacturers for advice on the suitability of the chosen section for the application in question, taking into account the proposed cladding type and any other circumstances likely to invalidate the manufacturer's assumptions, e.g. heavy point loads.

4.5 Restraint provided to the rafters and columns

The structural efficiency of any steel framed building depends not only on the selection of light and efficient sections, but also on the interaction between the frame members, the secondary steelwork and the cladding system. For this reason, it is common practice to use the secondary steelwork (the purlins and rails) to restrain the primary steelwork.

It is generally accepted that purlins and rails need not be checked for forces arising from the lateral restraint of rafters in either roof trusses or portal frames provided that the following conditions are met:

- The purlins are adequately restrained by sheeting
- There is bracing of adequate stiffness in the plane of the rafters or alternatively the roof sheeting is capable of acting as a stressed-skin diaphragm
- The rafters carry predominantly roof loads.

In certain European countries, the assumption that the secondary members can restrain the primary frame is acceptable as long as the secondary member providing the restraint is connected to a node point of the bracing system. In other countries, it is presumed that the roof system supplies a sufficiently stiff diaphragm to relax the requirement. In this case, roof bracing is still required, but need not intersect with every secondary member providing restraint. If a purlin or side rail cannot be used with stays (as shown in Figure 4.11) as a torsional restraint, a hot rolled member may be provided to meet this requirement.

Ideally, the compression flange of the rafter or column should be laterally restrained by direct attachment of the purlins or cladding rails. However, under the action of wind uplift, or close to the haunches of a portal frame under gravity loading, the inner flange of the member (i.e. the one to which the cladding is not attached) will be in compression and cannot be restrained directly by the purlins or cladding rails. In this situation, the frame designer can either introduce an additional hot-rolled steel member (often a structural hollow section) to laterally restrain the compression flange or, alternatively, the compression flange can be effectively held in position by a combination of lateral restraint to the tension flange (provided by the purlins or rails) and torsional restraint provided by rafter or column stays. Recommendations for the provision and design of restraints are given in EN 1993-1-1^[12], § 6.3.5.2 and Annex BB.3.

Rafter or column stays, as shown in Figure 4.11, may be used to provide torsional restraint to the rafter or column provided that they are connected to a suitably stiff purlin or cladding rail. Thin cold formed steel straps (working as ties) are often used, although angles may be used if the stay must work in compression (for example, if a stay can only be provided on one side of a member).

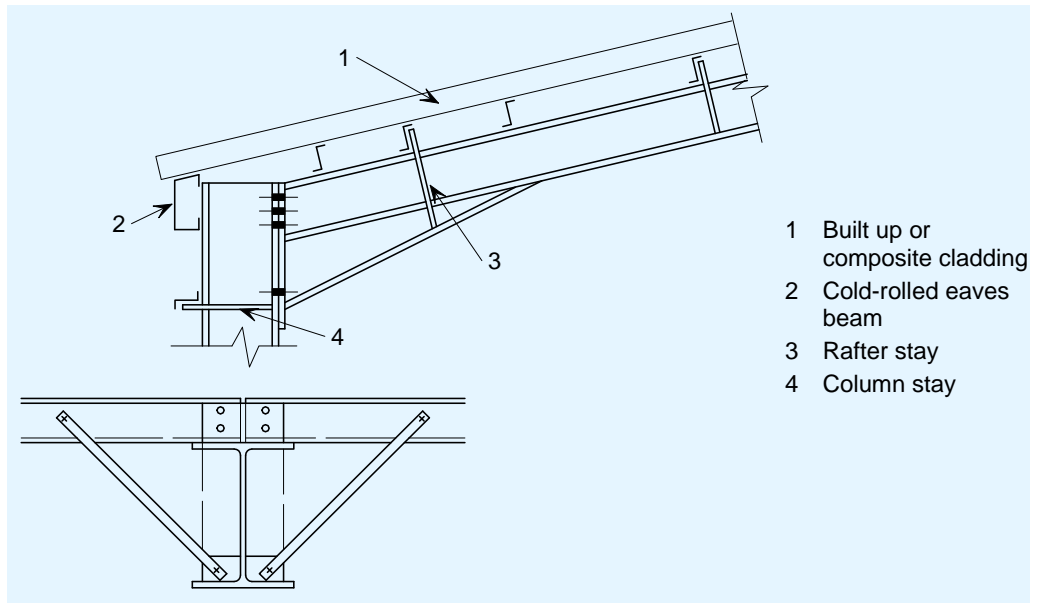


Figure 4.11 Details of column and rafter stay and connection

In order to provide the required level of torsional restraint to the rafters or columns, the purlins or cladding rails must possess sufficient flexural stiffness. Otherwise, there is a risk that the restraining member will bend and allow the restrained members to rotate, as shown in Figure 4.12. As a rule of thumb, it is normally adequate to provide a purlin or cladding rail of at least 25% of the depth of the member being restrained. In practice, this generally means that the purlins and side rails will be sufficiently stiff for portal frames with spans up to 40 m and frame spacings of 6 to 8 m. However, as the span increases relative to the frame spacing (and the rafter size increases relative to that of the purlins), the purlin stiffness may become insufficient to provide adequate torsional restraint and should, therefore, be checked.

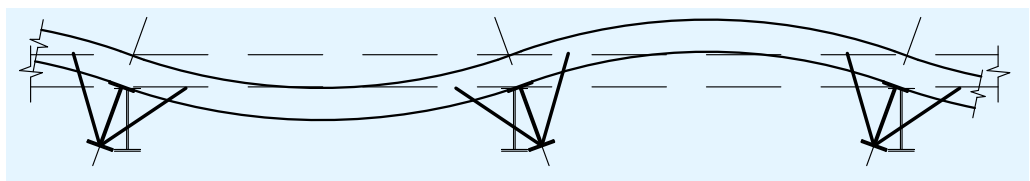


Figure 4.12 The importance of adequate purlin stiffness

4.6 Restraint of purlins and cladding rails

Cold formed steel purlins and cladding rails are extremely efficient at carrying loads by bending action, but they are susceptible to failure through lateral-torsional buckling unless they are adequately restrained. The economic

and safe design of the cladding and its supporting steelwork relies on the interaction between the individual components that make up the whole system.

Purlins and cladding rails are normally selected from manufacturer's load/span tables, which are derived from analytical models supported by test data. In producing their design data, all purlin manufacturers have to make a judgement regarding the degree of restraint that is available from the cladding system under gravity and wind uplift conditions. These assumptions are central to the design model and can have a significant effect on the design resistance of the purlin or rail. It is therefore essential that an equal or greater level of restraint is achieved in practice. This will depend on the choice of sheeting and the spacing of the fasteners.

In the gravity load case (or positive wind pressure in the case of a wall), restraint is provided directly to the top flange of the purlin (or side rail) by the liner sheet or insulated panel, as shown in Figure 4.13(a). Built-up cladding and insulated panels are generally capable of providing sufficient lateral restraint for the gravity loading case. In general, perforated liners are not considered to be restraining and the supporting purlins should, therefore, be designed as unrestrained members.

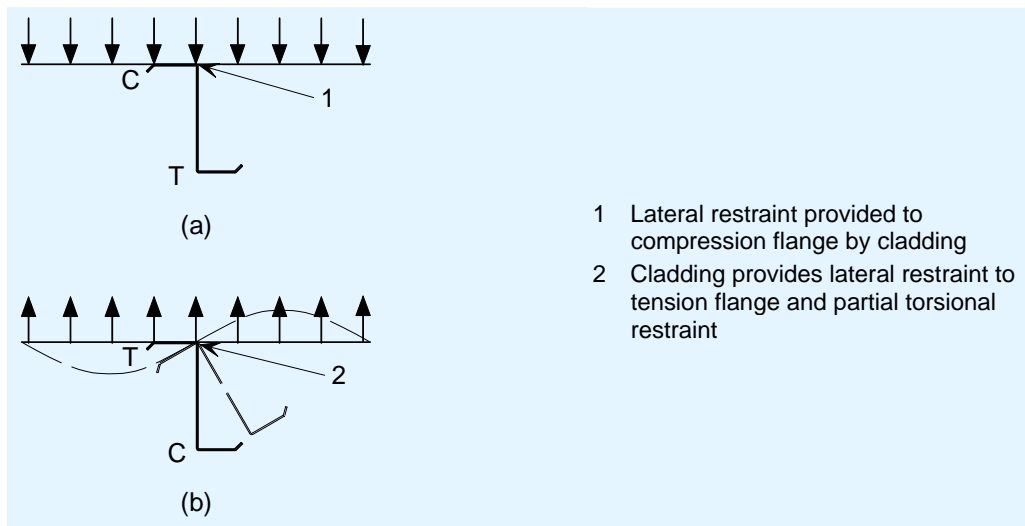


Figure 4.13 Purlin restraint

For wind uplift (or negative pressure on a wall), the cladding cannot provide lateral restraint directly to the compression flange. In this case, the purlin (or cladding rail) is restrained by a combination of lateral restraint to the tension flange and torsional restraint, as shown in Figure 4.13(b). The ability of the cladding to provide restraint is dependent not only on its in-plane shear stiffness (including the fasteners), but also its flexural stiffness. EN 1993-1-3 includes a method in Section 10 for assessing the degree of restraint provided by the cladding in this case. Unlike the gravity load case, the cladding only provides partial restraint to the purlin or rail. Consequently, the purlin manufacturers' technical literature should always give a lower capacity for purlins subjected to wind uplift loading (or suction on cladding rails).

EN 1993-1-3^[11] covers the design of purlins, liner trays and sheeting in Section 10.

5 HOT-ROLLED SECONDARY STEELWORK

As an alternative to cold formed steel, purlins and cladding rails may also be made from hot-rolled steel sections. At one time, this type of purlin was common in industrial buildings, often used in conjunction with steel roof trusses. The development of cold formed purlins (which are considerably lighter and cheaper) and the trend towards plastically designed portal frames with their onerous restraint requirements meant that the use of hot-rolled purlins became unusual in the UK and Ireland. However, hot-rolled purlins continue to be used in Continental Europe, often with long spanning cladding solutions such as deck and membrane or composite panels. They are particularly useful for providing an intermediate support to structural decking, where the decking by itself is incapable of spanning rafter to rafter.

Hot-rolled purlins have a higher load-carrying capacity than all but the largest cold formed purlins. This means that they are generally used at much greater spacings than their cold formed counterparts, typically 3 m or more. This wide spacing makes them unsuitable for plastically designed portal frames, which commonly require restraint to the rafters at approximately 1,8 m intervals. However, they are suitable for elastic frames and also for spans beyond the range of standard cold formed purlins (above 8 m). Hot-rolled purlins could of course be used at closer centres, but this would be uneconomic in most circumstances.

A considerable advantage of hot-rolled purlins over their cold formed rivals is their resistance to lateral-torsional buckling, especially where rectangular hollow sections are used. This property is essential if the cladding is unable to provide adequate restraint against lateral-torsional buckling. By contrast, cold formed purlins are only able to span as far as they do (typically 6 m to 8 m) because of the continuous restraint provided by the cladding. Similarly, where the local building regulations forbid using the cladding to restrain the structure, hot-rolled purlins are the only viable alternative to long spanning decks running rafter to rafter. Of course, apart from square hollow sections, hot-rolled purlins are not immune to lateral-torsional buckling and must, therefore, be designed with this mode of failure in mind.

Unlike cold formed purlins, it is not common for the manufacturers to produce safe load tables for hot-rolled beams. Their capacities must, therefore, be calculated by a structural engineer according to the recommendations of EN 1993-1-1^[12], taking account of the cross section resistance, lateral-torsional buckling and deflections. This process must be repeated for gravity and uplift load cases. If lateral-torsional buckling is the critical design criterion, the resistance of the member could be enhanced by the introduction of tubular restraints either at the mid-span or third points of the purlin. However, this will add cost to the structure in terms of additional steelwork and erection time.

Hot-rolled purlins can be designed as single or double-span beams. The latter option will significantly increase the bending stiffness of the purlin and should be used where deflection is the governing criterion. However, the high reaction at the intermediate support ($1,25 \times$ load in one span) can cause web crushing at this location. Sleeves are not generally used with hot-rolled purlins.

Part 8: Building Envelope

Hot rolled purlins have the added advantage of better fire resistance than light gauge cold formed purlins. This is shown by the noticeably higher inherent Massivity factor (cross section area/perimeter) which is used as a measure to define the fire resistance of a structural section.

REFERENCES

- 1 EN 14782:2006 Self-supporting metal sheet for roofing, external cladding and internal lining. Product specification and requirements
- 2 MCRMA Technical Paper No 12: Fasteners for metal roof and wall cladding: Design, detailing and installation guide
The Metal Cladding and Roofing Manufacturers Association, 2000
- 3 MCRMA Technical Paper No. 3: Secret fix roofing design guide.
The Metal Cladding and Roofing Manufacturers Association, 1999
- 4 MCRMA Technical Paper No. 6: Profiled metal roofing design guide
The Metal Cladding and Roofing Manufacturers Association, 2004
- 5 MCRMA Technical paper No. 16: Guidance for the effective sealing of end lap details in metal roofing constructions
The Metal Cladding and Roofing Manufacturers Association, 2004
- 6 ECCS Publication 41 European recommendations for steel construction: Good practice in steel cladding and roofing
European Convention for Constructional Steelwork – Recommendations for steel construction Technical Committee TC7, 1983.
- 7 European Directive 2002/91/EC: Energy Performance of Buildings
The European Commission, 2002
- 8 MCRMA Technical paper No. 8: Acoustic design guide for metal roof and wall cladding.
The Metal Cladding and Roofing Manufacturers Association, 1994
- 9 EN 1991:2002: Eurocode 1 Actions on structures
- 10 EN 1990: 2002: Eurocode Basis of structural design
- 11 EN 1993-1-3:2006: Eurocode 3 Design of steel structures. General rules. Supplementary rules for cold-formed members and sheeting
- 12 EN 1993-1-1:2005: Eurocode 3 Design of steel structures. General rules and rules for buildings